

PARA-MOUNT II®

Cutting edge vibratory technology for mining and aggregate.



INCREASE FEEDING CAPACITY FOR TWO-THIRDS THE ENERGY

Performance Advantage

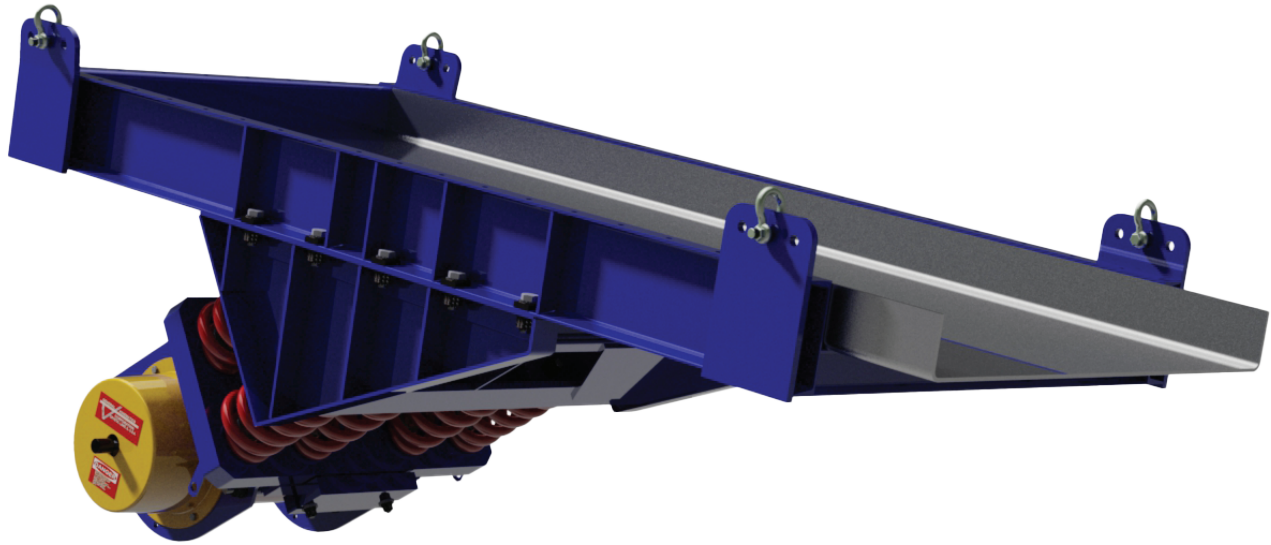
Proven performance and maintenance-free operation make PARA-MOUNT II® Vibratory Feeders the first choice in vibratory feeders for the most demanding applications. PARA-MOUNT II® Vibrating Feeders can be designed using either a fixed or variable force drive, and utilize GK's proven Two-Mass vibratory drive. This drive increases feed capacity, uses up to 2/3rd's less energy, and provides exceptional reliability and ease of maintainability.

Features & Benefits

- High-stroke for handling difficult materials
- Lower cost, same GK quality
- Refined engineering & fabrication procedures to increase strength and machine life
- Rugged engineering for continuous uptime
- Variable Force drive for feed rate adjustability
- Up to 2/3 less HP required to operate
- OEM specific models
- Foot or suspension mounted models

Enhanced Material Activation

Improved Material Flow. Greater Efficiency. Optimal Feeding.



Modular Construction

For situations in mines and other confined spaces where the existing structure prohibits easy installation of new equipment, GK can design your PARA-MOUNT II feeder using modular construction. In typical feeder installations, rigging and other construction issues equate to a laborious and costly project scope. By using pieces that fit in tight spaces of 3 feet or less, the General Kinematics PARA-MOUNT II® Modular Vibratory Feeder can be designed to be built in place using fasteners to eliminate the need for any welding.

Optional Add-ons

- Totally enclosed dust-proof designs
- Two-Mass or direct drive motors
- Explosion-proof enclosed motors
- Modular construction

Application Photos



GKM-03 PARA-MOUNT II®

Follow GK on Twitter | Facebook | LinkedIn | YouTube | GK Blog

USA | Germany | United Kingdom | China | India | Thailand

Call +815-455-3222

Visit www.gkaggregate.com